

Graphical User Interfaces for MT!-ITRON 3.0



U S Software's NetPeer™ and SuperPeg™

Chris Greiveldinger, Ph.D.

U S Software Corporation

chris@ussw.com

September 29, 1999



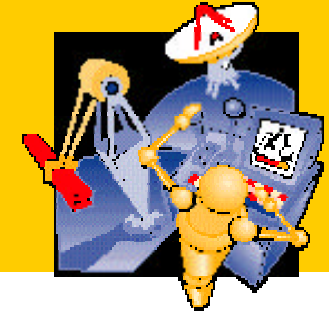
U S Software and MT!-ITRON



- **MT!-ITRON 2.0 introduced in Fall 1996**
 - **Based on mITRON 2.01 specification**
 - **First U.S. company to support μ ITRON**
- **MT!-ITRON 3.0 introduced in Fall 1998**
 - **Based on mITRON 3.0 specification**
- **Based on U S Software's MultiTask!TM kernel**
 - **Stable kernel with 15 year history**
- **MT!-ITRON 4.0 will be developed**



Product Integration and Testing



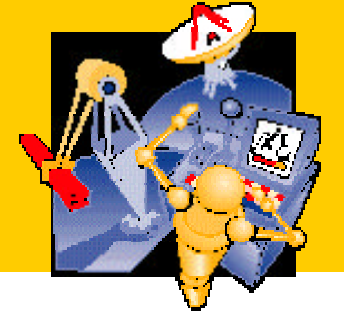
Processor	MT!-ITRON 2.0	MT!-ITRON 3.0	USNet [®]	USFiles [®]	NetPeer [™]
x86	Y	Y	Y	Y	Y
386PM	Y	U		Y	
SH	Y	Y	Y	Y	U
ColdFire	Y	Y			U
CR16	Y				
CR16B	Y	Y			
M*Core	Y	Y			
MIPS	Y	Y	Y	Y	U
PowerPC	Y	Y			
68K	Y	Y			
ARM	Y	Y	Y	Y	U

Y = yes, product integrated

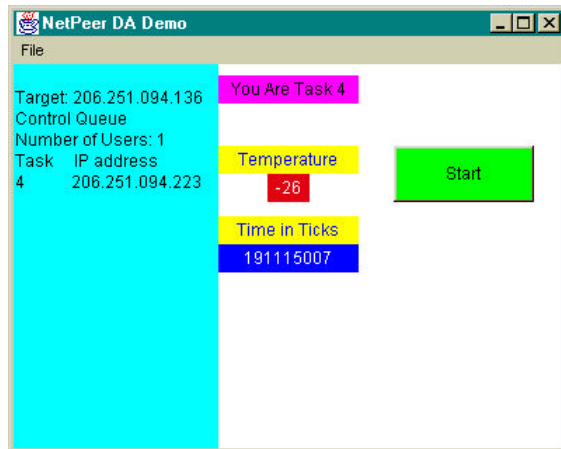
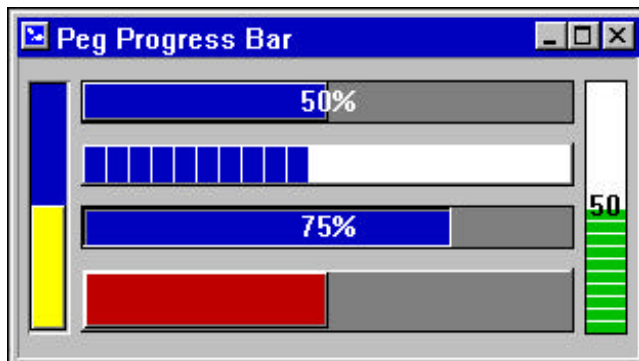
U = underway, integration in progress



GUIs for μ TRON



Local: SuperPeg

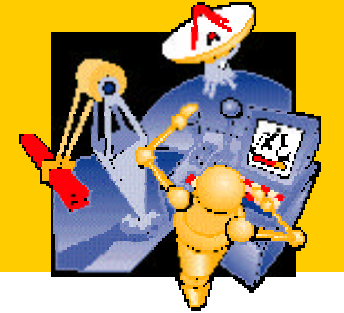


Remote: NetPeer

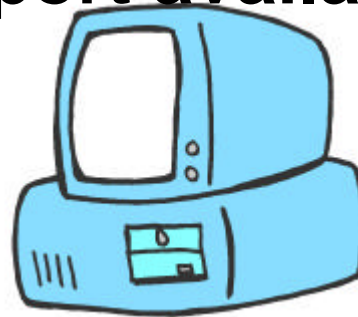
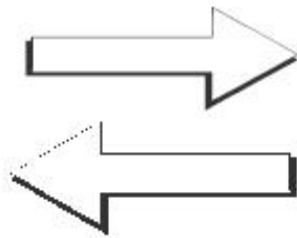
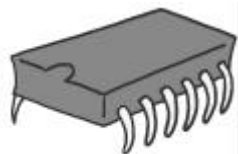
- Recently added a local GUI (SuperPeg)
- Complements our NetPeer product
- This combination allows GUI access at the target as well as from a remote workstation



NetPeer: Distributed Operating Environment



- Gives embedded target control of remote desktop
 - Provides GUI, file I/O, notification, database, etc...
- Library (< 16kb) linked in with application
- Communicates with a workstation application
 - Workstation application written in Java
 - Down load free <http://www.netpeer.com>
- mTRON 3.0 support available in source code

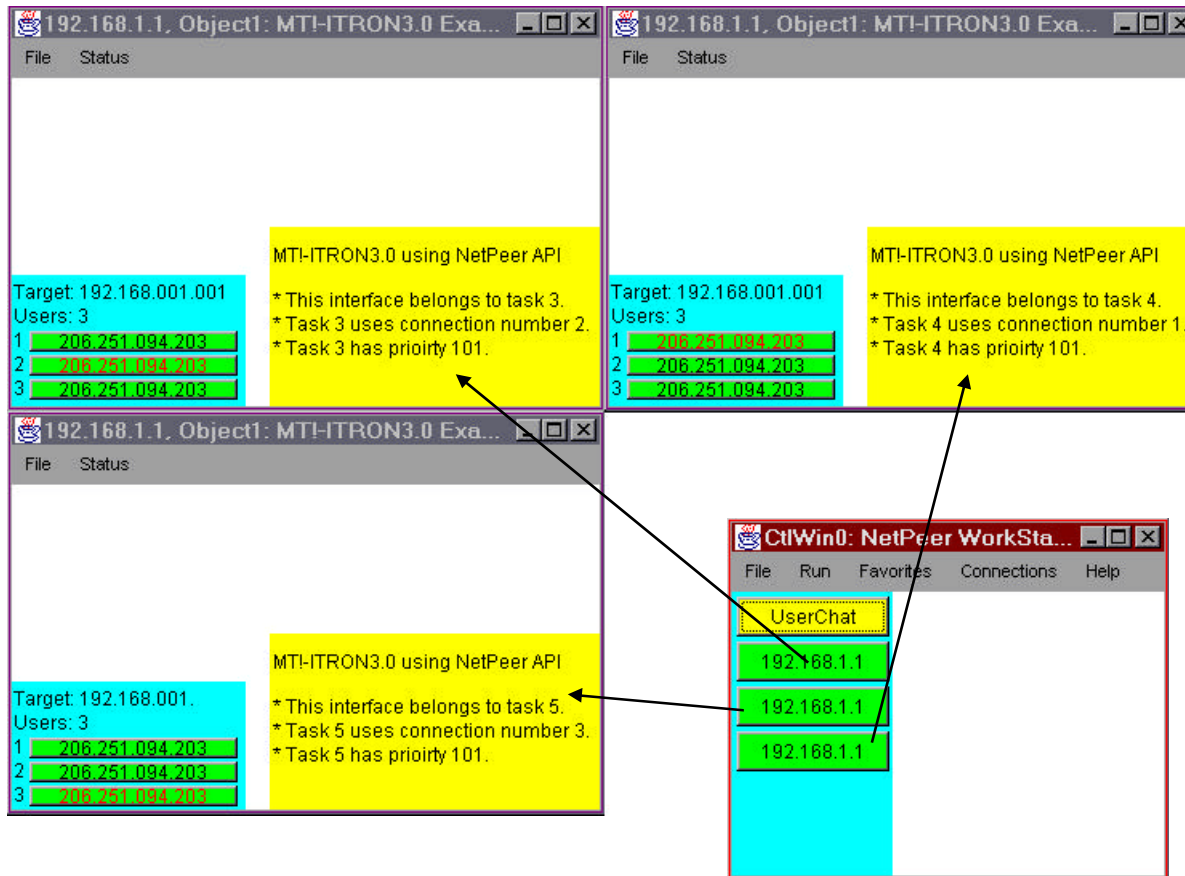
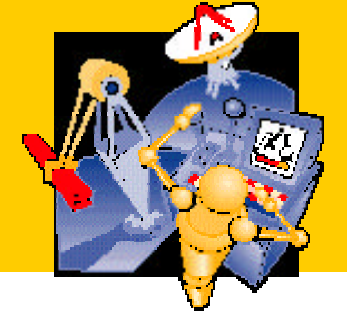


トランスタ技術



U S SOFTWARE
EMBEDDED EXCELLENCE

NetPeer Sample



- Simple interface example

- Each task has own GUI

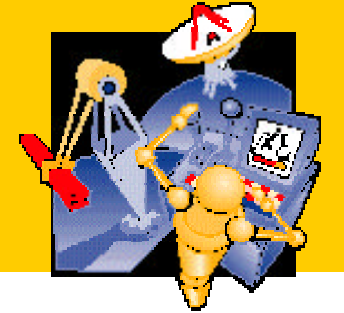
- Each task has own TCP/IP socket

- Multi-user

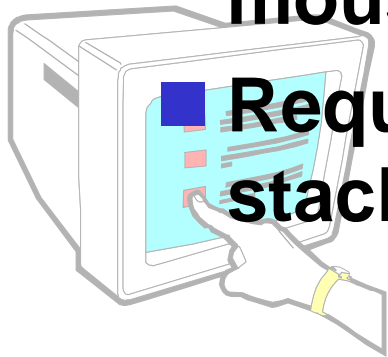
- Information returned from `ref_tsk()`



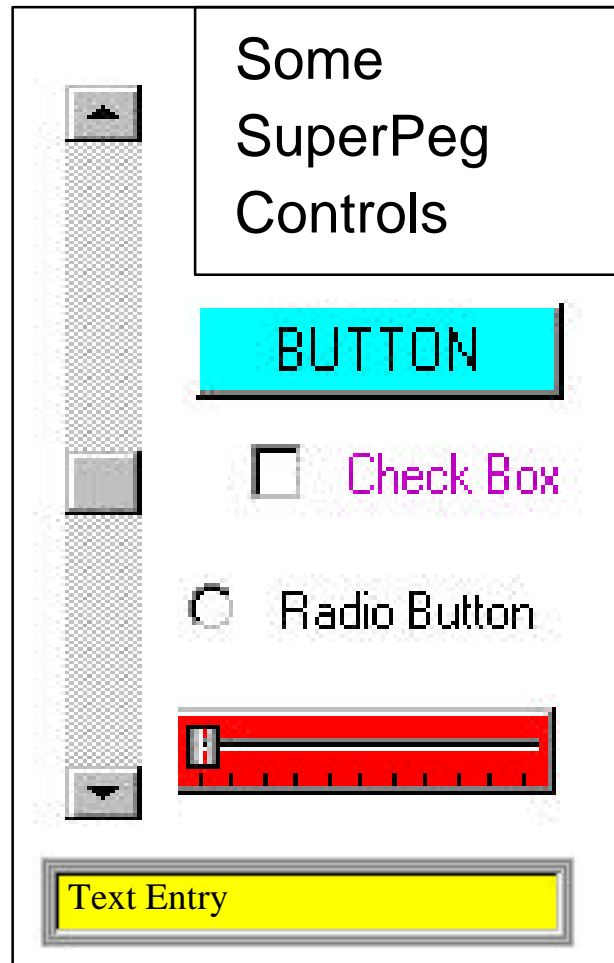
SuperPeg: Embedded GUI



- SuperPeg adds a GUI directly on the target system
- Source code in C++, provided royalty free
- Presently x86 real mode and 386 protected mode supported for Microsoft tools
- Provides drivers for I/O devices such as a mouse or touch screen
- Requires approximately 100K code, 4K stack, and 8K RAM for full-featured GUI



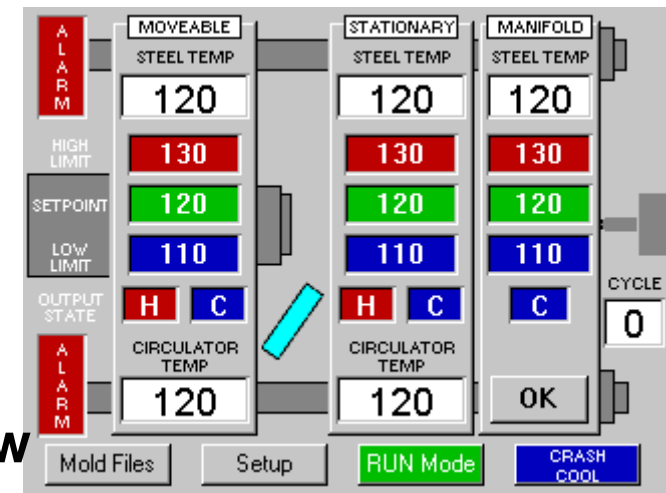
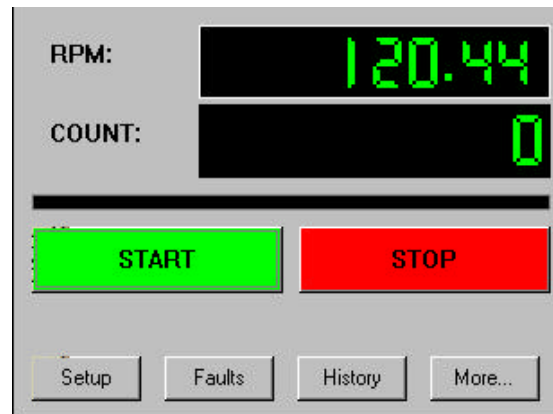
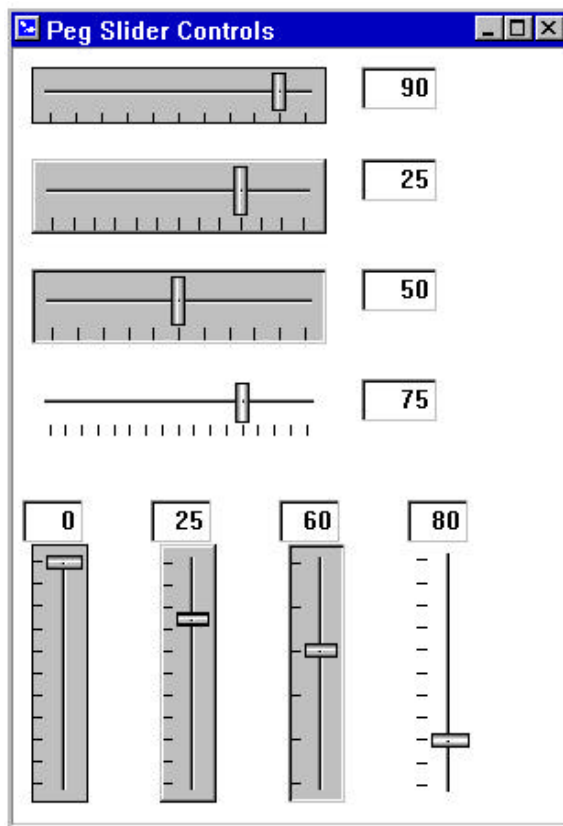
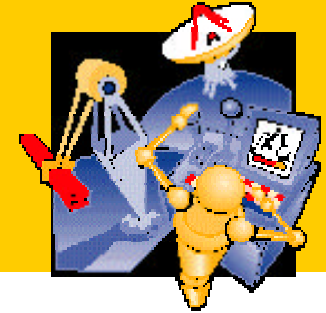
SuperPeg Features



- Drawing Routines (circle, line, plot, etc.)
- FontCapture supports Unicode fonts
- Image Convert compresses .bmp, .gif, and .jpg images
- Window Builder creates skeleton code for a user created window



SuperPeg Sample



- The default window styles can be customized

- Controls (buttons, sliders, etc.) can send messages between tasks

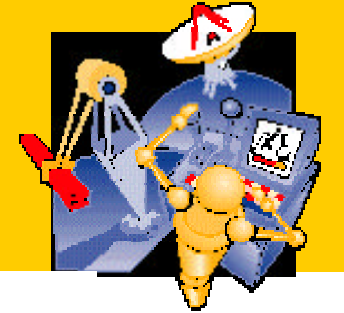


Conclusion



- **U S Software provides a variety of products that integrate with μ ITRON RTOSes**
- **In the future, we will:**
 - **Continue development and support of MT!-ITRON 3.0**
 - **Port MT!-ITRON 3.0 to new processors and compilers**
 - **Develop MT!-ITRON 4.0 to comply with μ ITRON 4.0**
- **We provide a local embedded GUI (SuperPeg) and a distributed operating environment (NetPeer), which add great flexibility to an application using a μ ITRON RTOS**

U S Software Booth Presentation

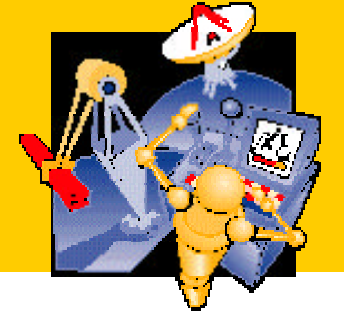


U S Softwareが提案する インターネットソリューション — インターネット家電編 —

本日午後4時30分より
U S Software社ブース (#544)にて



USSW Contact Information



U S Software Corporation
7175 NW Evergreen Parkway, Suite 100
Hillsboro, OR 97124
USA

ESC Booth # 544

Tel: 800.356.7097 (Toll Free Within U.S.)
503.844.6614

Fax: 503.844.6480

Email: info@ussw.com

Web: <http://www.ussw.com>
<http://www.netpeer.com>

